



Dear Clinician,

Şanlılar Ltd, Şti, manufacturer of the brand NucleOSS, was founded in İzmir in 2001 and manufactured the first dental implant of Turkey. In the light of the first day's excitement, meticulous R&D studies and knowledge, we adopt worldclass precision manufacturing protocols and continue to produce more innovative and user-friendly products for you.

In order to improve the operation quality and comfortable treatment processes, we design and develop high-quality and innovative products to present you.

We have founded TFI (Together for Implantology) Academy, in order to create a platform, where dentists can share their ideas, works and knowledge about implant within an ethical frame and to contribute to the development of dental implant area.

As NucleOSS we adopt trusty, quality and customer oriented production with our ethical, transparent and principle management.

As the first condition of development and growth, we are working more and more everyday with our open to change and innovative approach. We design, manufacture and develop constantly with our human oriented production and management understanding.

We are growing and fascinating together...



Salih **ŞANLI**

President

A handwritten signature in black ink, appearing to be "Salih ŞANLI".

Contents

About NucleOSS

03

T6 Standard and T6 Torq Implants

Bone Level Implant

06

Slimex Implant

Bone Level Implant

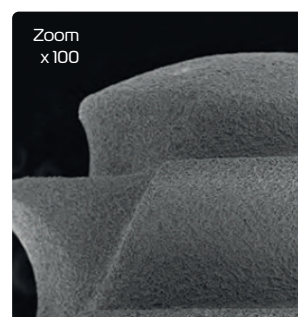
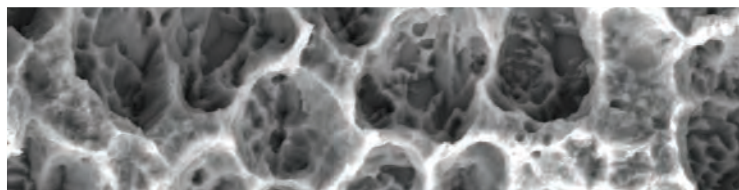
44

product catalog 2023

NucleOSS

 | Implant System

NucleOSS Dental Implant is a user friendly system that offers effective solutions for dentistry. Our aim is to offer effective treatment solutions with our high quality and user friendly products.



Certified Maxicell Surface

NucleOSS has already been existing among the world brands by combining its production know-how and updated technology and continues R&D studies while following its main policy 'continuous improvement'.



Single piece tissue level, bone level and short implant series are offered together with wide and contemporary superstructure lines which will make your life easier in your clinical solutions.

Our Scientific Support



Together for Implantology
Research & Education

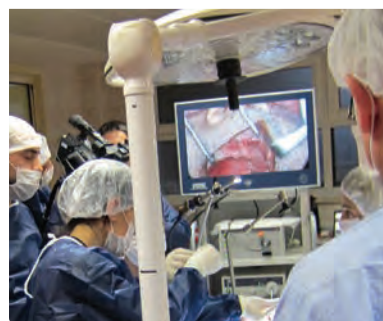
TFI (Together for Implantology) is a research/development organisation founded by NucleOSS. It's function and activities are arranged by a scientific board, which consists of a chairman and five members.



TFI aims to provide the dentists a platform for sharing opinions, studies, experiments and knowledge about implantology in an ethical frame.

In the light of these shares TFI aims to bring a different point of view to dentistry and contribute to development of implantology.

Owing to financial support of NucleOSS, membership is free for the dentists.



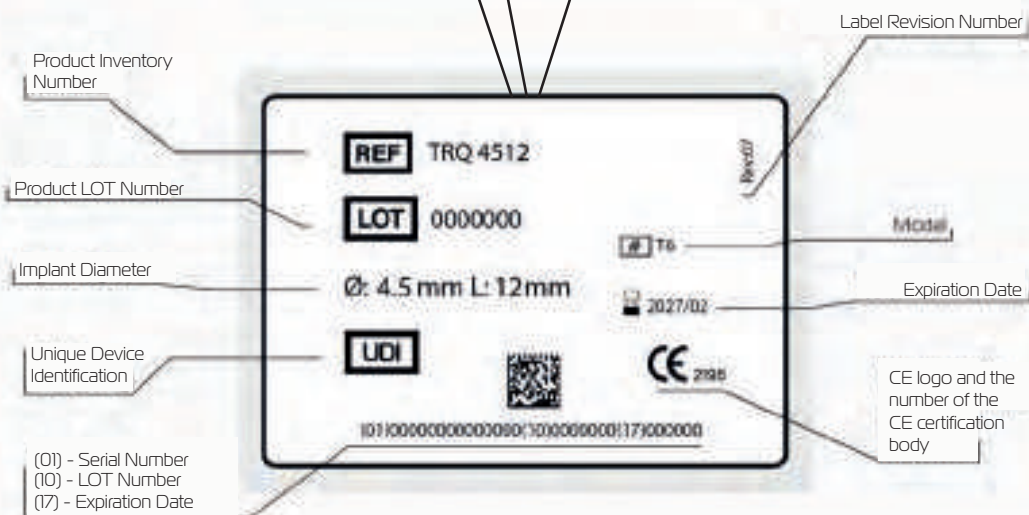
General Information

Product Label Information



Colour coded label
of the implant
diameter and
length

All Labels Contain the Same Informations.





T6 bone level
implant designed
with modern and
aesthetic details

Bone Level Implant



much more **implant**

T6 bone level implant which carries the modern and aesthetic design details, offers a safe and comfortable surgical experience both to you and your patients.

Wide variety of prosthetic superstructure options will help you in delivering brave smiles to your patients. T6 will renew your confidence with its smart and strong design.

All superstructures are compatible with T6 Torq and T6 Standard.



compatible

It offers solutions for all indications thanks to its wide superstructure options.





Your new
solution partner
for immediate and
early loading for
all bones

the recital **begins**

Bone Level Implant

With its 20 years of R&D experience and with the support of dentists, NucleOSS presents you the T6 torQ implant. It is designed for immediate and early loadings. T6 torQ implant provides high primary stability thanks to its sharp and deep tooth profile and helps achieve the high ISO values necessary for the immediate and early loading for all bone types.

It maintains T6 standart implant's proven strength by having same internal structure. T6 torQ and T6 standart superstructures are compatible. Again, the certified Maxicell surface provides safe and high survival rates for T6 torQ implants.

The unique surgical kit meets all the needs of our dentists and supports the surgery. The prosthetic processes are applied in a sensitive, comfortable and problem-free manner

superstructures

compatible with all
diameters



- Custom Solutions
Casting Process



- Custom Solutions
Digital CAD-CAM Process



- Temporary Solutions
(PEEK+Titanium)



T6 standard

General
Information



> Double Thread

Double Thread and reverse buttress form provide faster and easy loading. Increases contact area between bone and implant.

> Common

Internal - HEX
Deep Internal Connection
(T6 torq / T6 standard).

> Bone Collecting Zone

Zone for the bone remnants during insertion.

> Safe

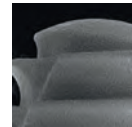
Rounded
Apex.



> Angled Surface

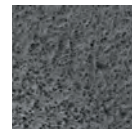
20 angled contact surface for damping of both lateral and axial forces.

Zoom
x100



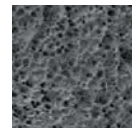
> Strong Side Walls

Zoom
x1000



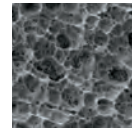
> Micro Threads

Zoom
x1500



> Self Cutting Threads

Zoom
x3000



> DistinctPlatform Switch

Certified
Maxicell
Surface

Unique
Clean
Surface



T6 Bone Level Implant offers 15 different diameter and length options.

T6 torq

General Information



> Double Thread

Double Thread and "V" form provide faster and aggressive loading. Increases contact area between bone and implant.

> Common

Internal - HEX
Deep Internal Connection
(T6 torq / T6 standard).

> Bone Collecting Zone

Zone for the bone remnants during insertion.

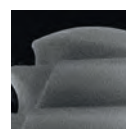
> DistinctPlatform Switch



> Angled Surface

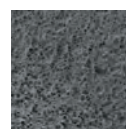
20 angled contact surface for damping of both lateral and axial forces.

Zoom
x100



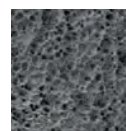
> Strong Side Walls

Zoom
x1000



> Self Cutting Threads

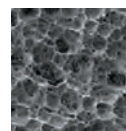
Zoom
x1500



> Safe

Rounded Apex.

Zoom
x3000



Unique
Clean
Surface

Certified
Maxicell
Surface





T6 Torq Bone Level implant offers 27 different diameter and length options.

Thanks to hexagonal inner connection of NucleOSS T6 Implant, abutments can be applied with 6 different positions within 60° rotation.



T6 standard

Implant
Bodies

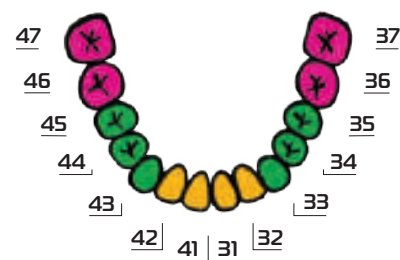
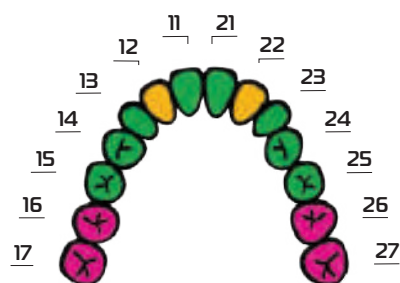
Cover Screw	>	T6 32150
Size		Product Code
8 mm	>	T6 3508
10 mm	>	T6 3510
12 mm	>	T6 3512
14 mm	>	T6 3514
17 mm	>	T6 3517




Cover Screw	>	T6 32151
Size		Product Code
6.5 mm	>	T6 41065
8 mm	>	T6 4108
10 mm	>	T6 4110
12 mm	>	T6 4112
14 mm	>	T6 4114
17 mm	>	T6 4117




Cover Screw	>	T6 32152
Size		Product Code
6.5 mm	>	T6 48065
8 mm	>	T6 4808
10 mm	>	T6 4810
12 mm	>	T6 4812
14 mm	>	T6 4814
17 mm	>	T6 4817



Diameter & Length Selection Suggestions:

The chart contains recommendations for surgical application of T6 Bone Level Implants. Clinician should assess the patient, case and the targeted final restoration.

The shape and dimensions of all T6 implant cover screws are the same. Color coded to identify implant diameters.

NucleOSS Implant System, is a user-friendly system aiming to provide effective solutions. It aims safe product, qualified manufacturing and comfortable solutions.

T6 torq

Implant
Bodies






Cover Screw	>	T6 32150
Size		Product Code
8 mm	>	TRQ 3508
10 mm	>	TRQ 3510
12 mm	>	TRQ 3512
14 mm	>	TRQ 3514
17 mm	>	TRQ 3517





Cover Screw	>	T6 32158
Size		Product Code
6.5 mm	>	TRQ 40065
8 mm	>	TRQ 4008
10 mm	>	TRQ 4010
12 mm	>	TRQ 4012
14 mm	>	TRQ 4014
17 mm	>	TRQ 4017





Cover Screw	>	T6 32157
Size		Product Code
6.5 mm	>	TRQ 45065
8 mm	>	TRQ 4508
10 mm	>	TRQ 4510
12 mm	>	TRQ 4512
14 mm	>	TRQ 4514
17 mm	>	TRQ 4517





Cover Screw	>	T6 32151
Size		Product Code
6.5 mm	>	TRQ 50065
8 mm	>	TRQ 5008
10 mm	>	TRQ 5010
12 mm	>	TRQ 5012
14 mm	>	TRQ 5014
17 mm	>	TRQ 5017

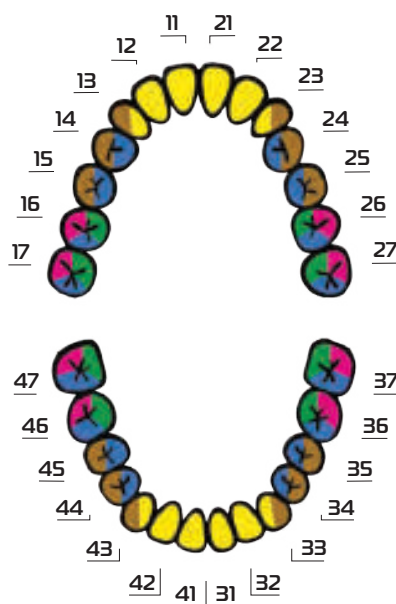




Cover Screw	>	T6 32152
Size		Product Code
6.5 mm	>	TRQ 60065
8 mm	>	TRQ 6008
10 mm	>	TRQ 6010
12 mm	>	TRQ 6012

Diameter & Length Selection Suggestions:

The recommended areas for diameters of T6 torq implants are shown in the image on the right. For treatment and implant selection, the clinician should evaluate the patient, the case and the intended restoration. Use outside the specified regions is the choice and responsibility of the clinician.



general information

Package Content



T6 Torq and T6 Standard implant is provided in blister and sealed sterile tube. The implant cover screw is included.

Sealed Sterile Tube Cover

Carrier Cover

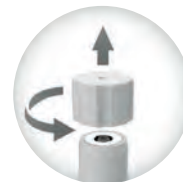
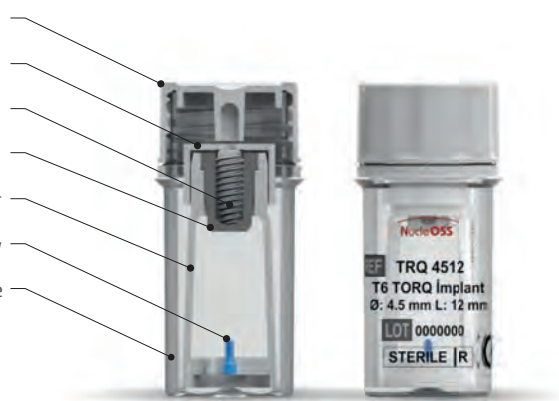
Implant Body

Titanium Carrier

Plastic Carrier

Implant Cover Screw

Sterile Tube



The tube cap is removed and the carrier is left on the sterile drape.

The carrier cover is opened by turning it facing upwards.

After the cover of the carrier is opened, the implant is released, so the carrier should never be tilted more than 60 degrees. Otherwise, the implant may fall out of its place.



Screwdriver



Ratchet



Motor

general information

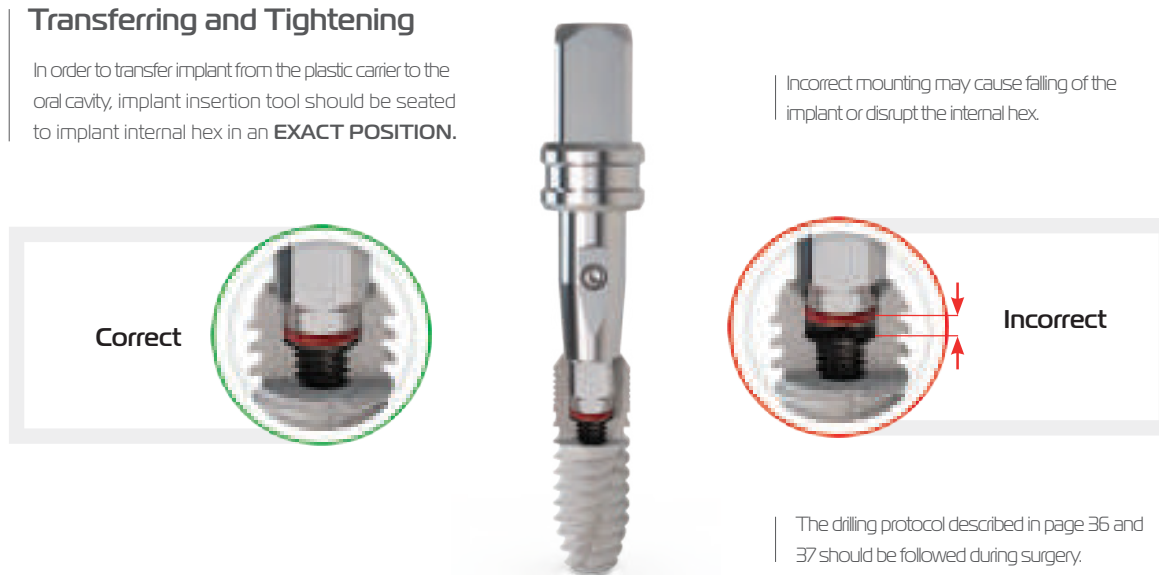
Implant Transferring



Transferring and Tightening

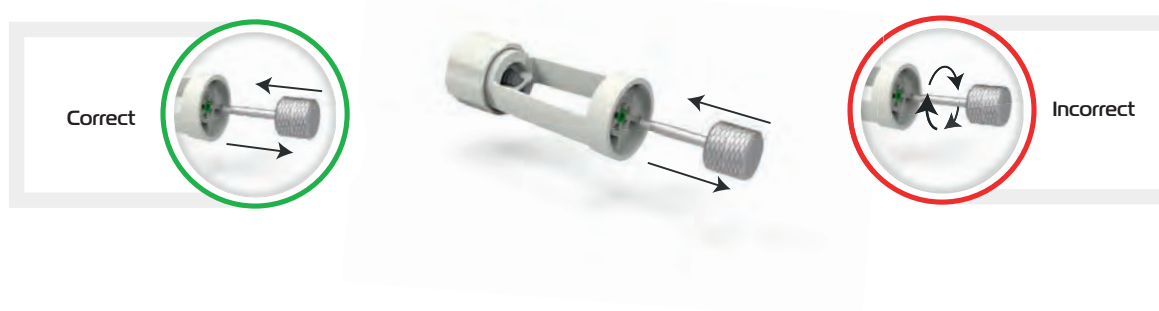
In order to transfer implant from the plastic carrier to the oral cavity, implant insertion tool should be seated to implant internal hex in an **EXACT POSITION**.

Incorrect mounting may cause falling of the implant or disrupt the internal hex.



Transferring the Cover

In order to transfer the cover screw from the tube, insert the hex driver into the cover screw fully and **PULL IT BACKWARDS** in the **SAME AXIS**.





Thanks to wide
superstructure options,
it gives your patients
brave smiles.

T6 implant Standard and Torq series
have compatible superstructure.



compatible **superstructures**

T6 prosthetics

Auxiliary Prosthetic Parts

NucleOSS gingiva formers are designed
in different forms and sizes to achieve the
desired soft tissue shaping.

Gingiva Former - Abutment Compatibility	
Abutment (h)	Gingiva Former (h)
1.0 mm	2.0 mm
2.0/3.0 mm	4.0 mm
4.0/5.0 mm	6.0 mm

Sinus Cap	Prosthetic Platform Ø (mm)	Gingival Height H (mm)	Product Code
-----------	----------------------------	------------------------	--------------

	5.5	0.5	T6 32154
		0	T6 32155
		1.0	T6 32156
	6.5	0	T6 32159
		0.5	T6 32160
		1.0	T6 32161

Two different forms of gingiva formers are present.



Cylindrical Form

Provides a cylindrical soft tissue emergence profile that is corresponding to the diameter of abutment platform.



Platform Switch

Provides an emergence profile that is compatible with the anatomy of the selected abutment.



● (Narrow Platform)
4.3 mm / NR



● (Standard Platform)
5.0 mm / SD



● WD (Wide Platform)
Ø6.0 mm

Gingiva Former Colour Code

Gingiva formers are color coded for varying platform diameters. They are made of TiGr5 material.

The intended use of the sinus cap is to prevent the implant body from falling into sinus cavity by abutting on the bone surface until the osseointegration process is completed.

T6 sinus covers are designed in two different platform diameters (Ø5,5 and Ø6,5 mm). Ø5,5 mm sinus covers are used for T6 Standard Ø3,5 - 4,1 - 4,8 mm and T6 Torq Ø3,5 - 4,0 - 4,5 - 5,0 mm implants. Ø6,5 mm sinus covers are used for T6 Torq Ø6,0 mm implants.

T6 prosthetics

Auxiliary
Prosthetic Parts



Product Image	Material	Prosthetic Platform Ø (mm)	Gingival Height GH (mm)	Description or Name	Product Code
---------------	----------	-------------------------------	----------------------------	---------------------------	--------------

➤ Gingiva Former

	Ti Cr5	4.3	2.0	Platform Switch	T6 NR501
			4.0	Platform Switch	T6 NR502
			6.0	Platform Switch	T6 NR503
	Ti Cr5	5.0	2.0	Platform Switch	T6 SD504
			4.0	Platform Switch	T6 SD505
			6.0	Platform Switch	T6 SD506
	Ti Cr5	6.0	2.0	Platform Switch	T6 WD507
			4.0	Platform Switch	T6 WD508
			6.0	Platform Switch	T6 WD509
	Ti Cr5	4.3	2.0	Cylindrical Form	T6 NR512
			4.0	Cylindrical Form	T6 NR513
			6.0	Cylindrical Form	T6 NR514
	Ti Cr5	5.0	2.0	Cylindrical Form	T6 SD515
			4.0	Cylindrical Form	T6 SD516
			6.0	Cylindrical Form	T6 SD517
	Ti Cr5	6.0	2.0	Cylindrical Form	T6 WD518
			4.0	Cylindrical Form	T6 WD519
			6.0	Cylindrical Form	T6 WD520

➤ Temporary Gingiva Former

	PEEK	6.0		The material is PEEK and it is suitable for shaping.	T6 32034
				Abutment Screw	T6 16000

In some cases where there is abundant soft tissue, patients may experience pain during the try-in stages with implant systems that has distinctive platform shift features. In order to eliminate this, please use the appropriate abutment and gingiva former. The compatibility given above in this page. However in order to use this chart it is advisable to decide about the emergence profile diameter of the final restoration. The distance and location of the edentulous gap should also be considered in this decision.

T6 prosthetics

Auxiliary
Prosthetic Parts



Product Image	Material	Prosthetic Platform Ø (mm)	Gingival Height GH (mm)	Description or Name	Product Code
---------------	----------	-------------------------------	----------------------------	---------------------	--------------

› Implant Impression Posts

		● 4.3	2.0	Impression Post (Close)	T6 32618
			2.0	Impression Post (Open) NO-HEX	T6 32605
			2.0	Impression Post (Open) HEX	T6 32604
	Ti Gr5	● 4.5	2.0	Impression Post without cap HEX	T6 32620

› Abutment Impression Posts

	Ti Gr5	● 4.8		Impression Post (Open) NO-HEX	T6 32613
				Impression Post (Close) NO-HEX	T6 32614
				Impression Post (Open) HEX	T6 32616
				Impression Post (Close) HEX	T6 32617

› Connection Screws

	Ti Gr5			Abutment Screw	T6 16000
				Open Tray Impression Screw	T6 16002
				Close Tray Impression Screw w/o Cap	T6 16010
				Occlusal Screw	T6 16009
				Impression Screw(Open)	T0 16004

› Analog

	Stainless Steel			Analog	T6 32201
	Ti Gr5			Multi Unit Analog (NO-HEX)	T6 32207
				Multi Unit Analog (HEX)	T6 32208

› Impression Cap

	Plastic			Impression Cap	T0 32912
--	---------	--	--	----------------	----------

Impression posts are used for easy, fast and comfortable impression taking. Hex & No-Hex designs are available. The package contains impression posts and connection screws.

T6 prosthetics

Cement-retained Solutions



Product Image	Material	Prosthetic Platform Ø (mm)	Gingival Height GH (mm)	Description or Name	Product Code
Standard Straight Abutments					
	Ti Gr5	4.3	1.0		T6 NR040
			2.0		T6 NR041
			3.0		T6 NR042
			4.0		T6 NR043
			5.0		T6 NR044
	Ti Gr5	5.0	1.0		T6 SD045
			2.0		T6 SD046
			3.0		T6 SD047
			4.0		T6 SD048
			5.0		T6 SD049
	Ti Gr5	6.0	1.5		T6 WD050
			3.0		T6 WD051
			4.5		T6 WD052
Impression Cap					
	Plastic	4.3 5.0 6.0			T0 32909
					T0 32910
					T0 32911
	Ti Gr5			Abutment Screw	T6 16000



Package Included

It offers solutions in different prosthetic platform diameters and gingival heights for cement-retained prosthetic solutions. You can select the appropriate basis for planning from the table. The abutments are made of TiGr5 material.

Abutments are supplied with measuring cap, and abutment screw.



T6 prosthetics

Cement-retained
Solutions





Product Image	Material	Prosthetic Platform Ø (mm)	Gingival Height GH (mm)	Description or Name	Product Code
---------------	----------	----------------------------	-------------------------	---------------------	--------------

➤ Universal Straight Abutments

	Ti Gr5	4.3		HEX	T6 NR001
		5.0		HEX	T6 SD002
		6.0		HEX	T6 WD003
	Ti Gr5			Abutment Screw	T6 16000

➤ Temporary Abutments

	PEEK	5.0	1	HEX	T6 32022
	TiGr5	4.5	1	NO-HEX	T6 32023
			2	HEX	T6 32024
			2	NO-HEX	T6 32025
	TiGr5			Abutment Screw	T6 16000



Package Included



Package Included

Universal Straight Abutments; It offers solutions to users who want to create a foot-hold in the desired size and form with the shaping method. It is made of TiGr5 material. Packed with abutment screw.

Temporary Abutments; Easily shaped temporary abutments made of PEEK and TiGr5 materials can be used until permanent prostheses are made.

There are Hex and No-Hex options. Packed with abutment screw.

T6 prosthetics

Cement-retained Solutions



Product Image	Material	Prosthetic Platform Ø (mm)	Gingival Height GH (mm)	Description or Name	Product Code
	Ti Gr5	● 4.3	1.0	15°	T6 NR120
			2.0	15°	T6 NR121
			3.0	15°	T6 NR122
			4.0	15°	T6 NR123
	Ti Gr5	● 5.0	1.0	15°	T6 SD128
			2.0	15°	T6 SD129
			3.0	15°	T6 SD130
			4.0	15°	T6 SD131
	Ti Gr5	● 5.0	1.0	25°	T6 SD132
			2.0	25°	T6 SD133
			3.0	25°	T6 SD134
			4.0	25°	T6 SD135
	Ti Gr5	● 6.0	1.5	15°	T6 WD136
			3.0	15°	T6 WD137
			5.0	15°	T6 WD138
	Ti Gr5	● 6.0	1.5	25°	T6 WD140
			3.0	25°	T6 WD141
			5.0	25°	T6 WD142
	Ti Gr5			Abutment Screw	T6 16000



Package Included








Angled abutments offer solutions in different prosthetic platform diameters and gingival heights for cement-retained angled prosthesis solutions. It has 15° and 25° angled options. You can select the appropriate basis for planning from the table. The abutments are made of TiGr5 material.

The Abutments are packed with abutment screw.

T6 prosthetics

Cement-retained
Solutions



Product Image	Material	Prosthetic Platform Ø (mm)	Gingival Height GH (mm)	Description/ Name	Product Code
↳ Esthetic Abutments (Straight)					
	Ti Gr5	 4.3	1.0/2.0	Straight	T6 NR005
			2.0/3.0	Straight	T6 NR006
	Ti Gr5	 5.0	1.0/2.0	Straight	T6 SD007
			2.0/3.0	Straight	T6 SD008
	Ti Gr5	 6.0	1.5/2.5	Straight	T6 WD009
			2.5/3.5	Straight	T6 WD010
	Ti Gr5			Abutment Screw	T6 16000



Package Included

Aesthetic angled abutments provide an aesthetic appearance in areas with different soft tissue thicknesses, thanks to their variable gingival form.

It offers solutions in different prosthetic platform diameters for single and multiple tooth cemented angled prosthesis solutions.

T6 prosthetics

Cement-retained Solutions



Product Image	Material	Prosthetic Platform Ø (mm)	Gingival Height GH (mm)	Description or Name	Product Code
Esthetic Abutments (Angled)					
	Ti Gr5	4.3	1.0/2.0	15°	T6 NR101
			2.0/3.0	15°	T6 NR102
			3.0/4.0	15°	T6 NR103
	Ti Gr5	5.0	1.0/2.0	15°	T6 SD109
			2.0/3.0	15°	T6 SD110
			3.0/4.0	15°	T6 SD111
	Ti Gr5	5.0	1.0/2.0	25°	T6 SD112
			2.0/3.0	25°	T6 SD113
			3.0/4.0	25°	T6 SD114
	Ti Gr5	6.0	2.0/3.0	25°	T6 WD117
			2.0/3.0	25°	T6 WD118
	Ti Gr5			Abutment Screw	T6 16000



Package Included

You can choose the base suitable for planning from the table. Straight, 15° and 25° angled options are available. The abutments are made of TiGr5 material. Abutments are packed with abutment screw.

T6 prosthetics

Screw-retained
Solutions NO-HEX



Product Image	Material	Prosthetics Platform Ø (mm)	Gingival Height GH (mm)	Description/ Name	Product Code
➤ Multi Unit Abutment Multiple Teeth Restorations No-Hex					
	Ti Gr5	4.8	1.0	0°	T6 32422
			2.5	0°	T6 32423
			4.0	0°	T6 32424
	Ti Gr5	4.8	1.5	17°	T6 32425
			2.5	17°	T6 32426
			4.0	17°	T6 32427
	Ti Gr5	4.8	1.5	30°	T6 32428
			2.5	30°	T6 32429



Package Included



Package Included

Multi unit abutments have flat, 17° and 30° angled options. The abutments are made of TiGr5 material.






Multi unit straight abutments are packed with a green burn out cap and two occlusal screws.

Multi unit angled abutments are packed with green burn out cap, 2 occlusal screws and 1 multi unit connection screw.

T6 prosthetics

Screw-retained
Solutions NO-HEX






Product Image	Material	Prosthetics Platform Ø (mm)	Gingival Height GH (mm)	Description/ Name	Product Code
» Auxiliary Parts (No-Hex)					
	Ti Gr5	 4.8	5.7	Comfort Cap	T6 32921
			4.4	Comfort Cap	T6 32915
	Ti Gr5	 4.8		Ti-Base Abutment	T6 32813
				Titanium Cap	T6 32916
	Peek Delrin	 4.8		Scan Post	T6 32037
				Burn-Out Cap	T6 32917
» Impression Post (No-Hex)					
	Plastic Ti Gr5	 4.8		Impression Cap	T0 32912
				Impression Piece (Close)	T6 32614
	Ti Gr5	 4.8		Impression Post (Open)	T6 32613
				Impression Piece (Open) Screw	T0 16004
	Ti Gr5			Connecting Screw	T6 16008
				Occlusal Screw	T6 16009
» Analog					
	Ti Gr5	 4.8		Multi Unit Analog (NO-HEX)	T6 32207

Screw abutments, which are preferred in multiple dental prosthesis treatments, offer correct and permanent solutions to users with different platform diameters, gingival heights and angled options.

T6 prosthetics

Screw-retained
Solutions HEX



Product Image	Material	Prosthetic Platform Ø (mm)	Gingival Height GH (mm)	Description or Name	Product Code
Multi Unit Straight Abutment Single Teeth Restoration Hex					
	Ti Gr5	● 4.8	1.0	0°	T6 32413
	Ti Gr5	● 4.8	2.5	0°	T6 32414
	Ti Gr5	● 4.8	4.0	0°	T6 32415













Package Included

The platform of the Multi Unit straight abutments is in HEX structure and the body connection structure is screwed. Compatible with all T6 Standard and T6 Torq implants. It is made of TiGr5 material.

Multi unit straight abutments (HEX) are packed with blue burn out cap and two occlusal screws.

T6 prosthetics

Screw-retained
Solutions HEX

Product Image	Material	Prosthetic Platform Ø (mm)	Gingival Height GH (mm)	Description or Name	Product Code
Auxiliary Parts (Hex)					
	Ti Gr5	 4.8	5.7	Comfort Cap	T6 32921
			4.4	Comfort Cap	T6 32915
	Ti Gr5	 4.8		Ti-Base Abutment	T6 32814
				Titanium Cap	T6 32919
	Peek Delrin	 4.8		Scan Post	T6 32038
				Burn-Out Cap	T6 32918
	Plastic			Impression Post (Open)	T0 32616
	Ti Gr5	 4.8		Impression Post (Open) Screw	T0 16004
				Impression Post (Closed)	T6 32617
				Impression Cap	T0 32912
				Occlusal Screw	T6 16009
Analog					
	Ti Gr5	 4.8		Multi Unit Analog HEX	T6 32208

T6 prosthetics

Custom
Solutions



Ürün Görseli	Materyal	Protetik Platform Ø (mm)	Diş Eti Yüksekliği GH (mm)	Açıklama/Ad	Kod
-----------------	----------	--------------------------------	----------------------------------	-------------	-----

› Universal Ti-Base Casting Abutments

	Ti Gr5	4.0	0.7	Multiple Teeth Restorations (NO-HEX)	T6 32800
			0.7	Single Tooth Restorations (HEX)	T6 32801

› Auxiliary Parts

	Delrin	4.3		Burn Out Cap	T0 32907
	Ti Gr5			Abutment Screw	T6 16001



Package Included

Universal Ti-Base abutments are designed for clinician and laboratories who design custom superstructures with the casting technique. It is made of TiGr5 material.

Universal Ti-Base abutments are packed with white burn out cap and two abutment screws.

T6 prosthetics

Custom
Solutions



Ürün Görsele	Materyal	Protetik Platform Ø (mm)	Diş Eti Yüksekliği GH (mm)	Açıklama/Ad	Kod
-----------------	----------	--------------------------------	----------------------------------	-------------	-----

CoCr Casting Abutments

	<div>CoCr</div> <div>PEEK</div>	<div>4.5</div>		CoCr Abutment No-Hex	T6 32816
				CoCr Abutment Hex	T6 32815
				Burn-Out Cap	T0 32922

Impression Posts

	<div>Ti Gr5</div>	<div>4.3</div>	2.0	HEX (closed)	T6 32618
			2.0	HEX (open)	T6 32604
			2.0	NO-HEX (open)	T6 32605
	<div>Ti Gr5</div>			Abutment Screw	T6 16000
				Open Tray Impression Screw	T6 16002
				Close Tray Impression Screw w/o Cap	T6 16010
	<div>Plastic</div>			Impression Cap	T0 32912

Analog

	<div>Stainless Steel</div>	<div>3.8</div>		<div>Analog</div>	<div>T6 32201</div>
--	----------------------------	----------------	--	-------------------	---------------------



Package Included

CoCr Casting Abutments are used for custom abutments design with casting technique. The abutment and the casting cap are combined.

CoCr casting abutments are packed with abutment screw.

T6 prosthetics

Custom
Solutions



Product Image	Material	Prosthetics Platform Ø (mm)	Gingival Height GH (mm)	Description/ Name	Product Code
---------------	----------	-----------------------------	-------------------------	-------------------	--------------

➤ CAD-CAM Abutments

	Ti Gr5	4.5	0.7	Cad-Cam NudeOSS Ti-Base Multiple Teeth Applications NO-HEX	T6 32805
			2.4		T6 32807
	Ti Gr5	4.5	0.7	Cad-Cam NudeOSS Ti-Base Single Tooth Applications HEX	T6 32804
			2.4		T6 32806

➤ Scan Body Over Implant-Analogue

	PEEK	4.2	2.4		T6 32898
--	------	-----	-----	--	----------

➤ Cad-Cam Cerec®

	Ti Gr5 PP	4.5	0	Ti-Base	T6 32802
				Scan Cap	T0 32949

➤ Digital Analogs

	Stainless Steel	4.2		Digital Analog	T6 32204
	Ti Gr5	4.8		Multi Unit Digital Analog	T6 32210
	Ti Gr5			T6 Digital Analog Screw M2	T0 2015



Package Included



Package Included

NucleOSS offers different CAD-CAM solutions for digital platform users.



T6 prosthetics

Custom
Solutions




Product Image	Material	Prosthetics Platform Ø (mm)	Gingival Height GH (mm)	Description/ Name	Product Name
---------------	----------	-----------------------------	-------------------------	-------------------	--------------


Multi Unit CAD-CAM

	Ti Gr5	● 4.8		Ti-Base Abutments (NO-HEX)	T6 32813
				Ti-Base Abutments (HEX)	T6 32814
	PEEK	● 4.8		Scan Post (NO-HEX)	T6 32037
				Scan Post (HEX)	T6 32038

Ti-Base Healing Caps

	Ti Gr5	● 4.6	4.0		T6 32510
			6.0		T6 32511

Premill Abutment

	Ti Gr5	● 10.0			T6 PR01
---	--------	--------	--	--	---------

CAD-CAM solutions are available for multi-unit screwed superstructures as well as single-tooth and multi-tooth solutions cemented on Ti-Base. There are Hex and No Hex options.

In personalized CAD-CAM solutions, a personalized abutment can be obtained in the desired form, up to a maximum of 25° and 5.0mm gingival height, by scraping on the premil. The abutments are packed with abutment screw.








Package Included

T6 prosthetics

Overdenture
Solutions



Product Image	Material	Prosthetic Platform Ø (mm)	Gingival Height GH (mm)	Description or Name	Product Code
⌵ Ball Abutments					
	Ti Gr5	 4.5	1.5		T6 32301
			3.0		T6 32302
			5.0		T6 32303
⌵ Impression Posts					
	Ti Gr5	 3.5		Impression Post	T0 32615
	Stainless Steel			Analog	T0 4521
⌵ Auxiliary Parts					
	Ti Gr5			Metal Ring & Silicon	T0 5200
				Silicon Ring	T0 4500-3
				Impression Part Silicon	T0 4500-18
	Ti Gr5			Metal Housing	T0 5207
	Plastic			Yellow/Soft	T0 4500-16
				Pink/Standard	T0 4500-7



Package Included

Ball abutment solutions are offered to users with different gingival heights in removable total prosthesis treatments.

Ball abutments are packed with metal ring and silicone ring. It is made of TiGr5 material.




T6 prosthetics

Overdenture
Solutions



Product Image	Material	Prosthetic Platform Ø (mm)	Gingival Height GH (mm)	Description or Name	Product Code
---------------	----------	----------------------------	-------------------------	---------------------	--------------

Equator® Abutments

	Ti Gr5	 4.5	1.5		T6 32700
			3.0		T6 32701
			5.0		T6 32702
 Package Included	<u>Ti Gr5</u>			Metal Housing	CA008
	silicon			Transparent /Standard	CN051
				Pink/Soft	CN052
				Black / Laboratory	CN068

Impression Posts

	Ti Gr5	● 4.5		Impression Post	044CAIN
	Stainless Steel			Analog	144AE

Auxiliary Parts

	Stainless Steel			Tightening Part (Ratchet)	774CHE
				Tightening Part (Contra-angle)	760CE
				Cap Inserter and Extractor Tool	485IC



Package Included

Equator® Abutment is a registered trademark of Rhein 83. Equator abutment solutions are offered to users with different gingival heights in removable total prosthesis treatments. It is made of TiGr5 material. Equator® abutments are packaged with metal cap, standard cap, soft cap and laboratory cup.

safe surgery

T6 Standard Surgical
and Prosthetic Kit



CRH-109

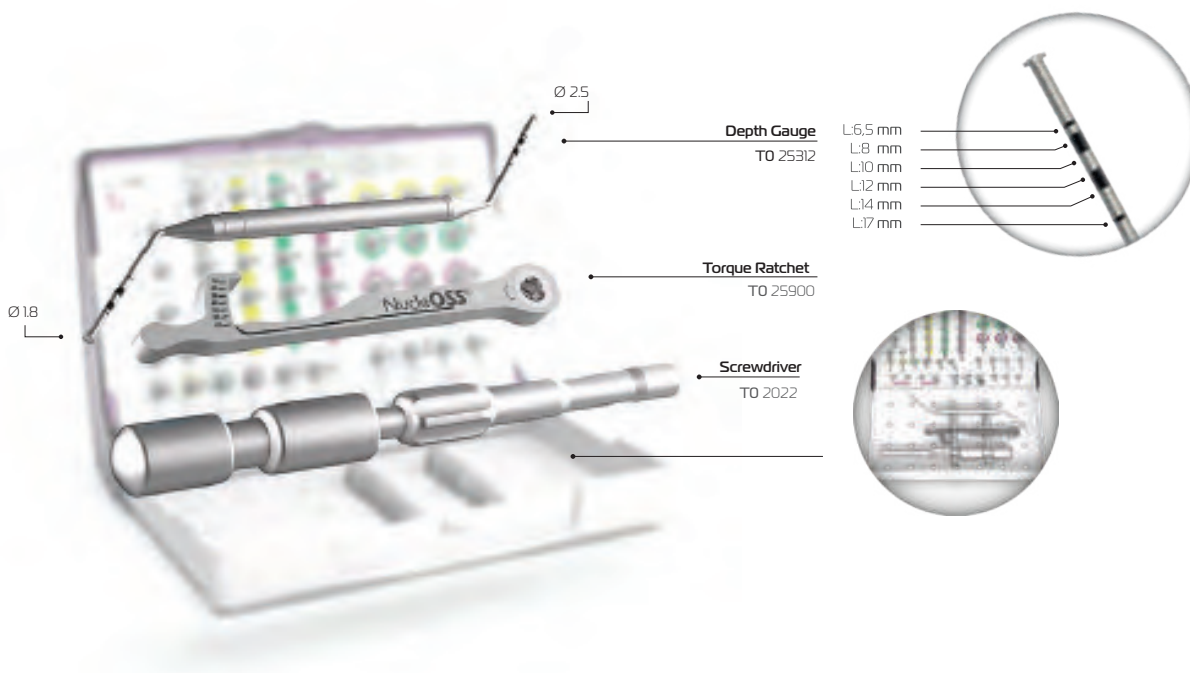
T6 Standard surgical set; It consists of two parts, a movable middle shelf where surgical burs and clamping parts are located, and a lower section where torque ratchet and other hand tools are located.

Thanks to the flat and embedded type of silicones holding the surgical parts, they are dirt-proof and easy to clean.

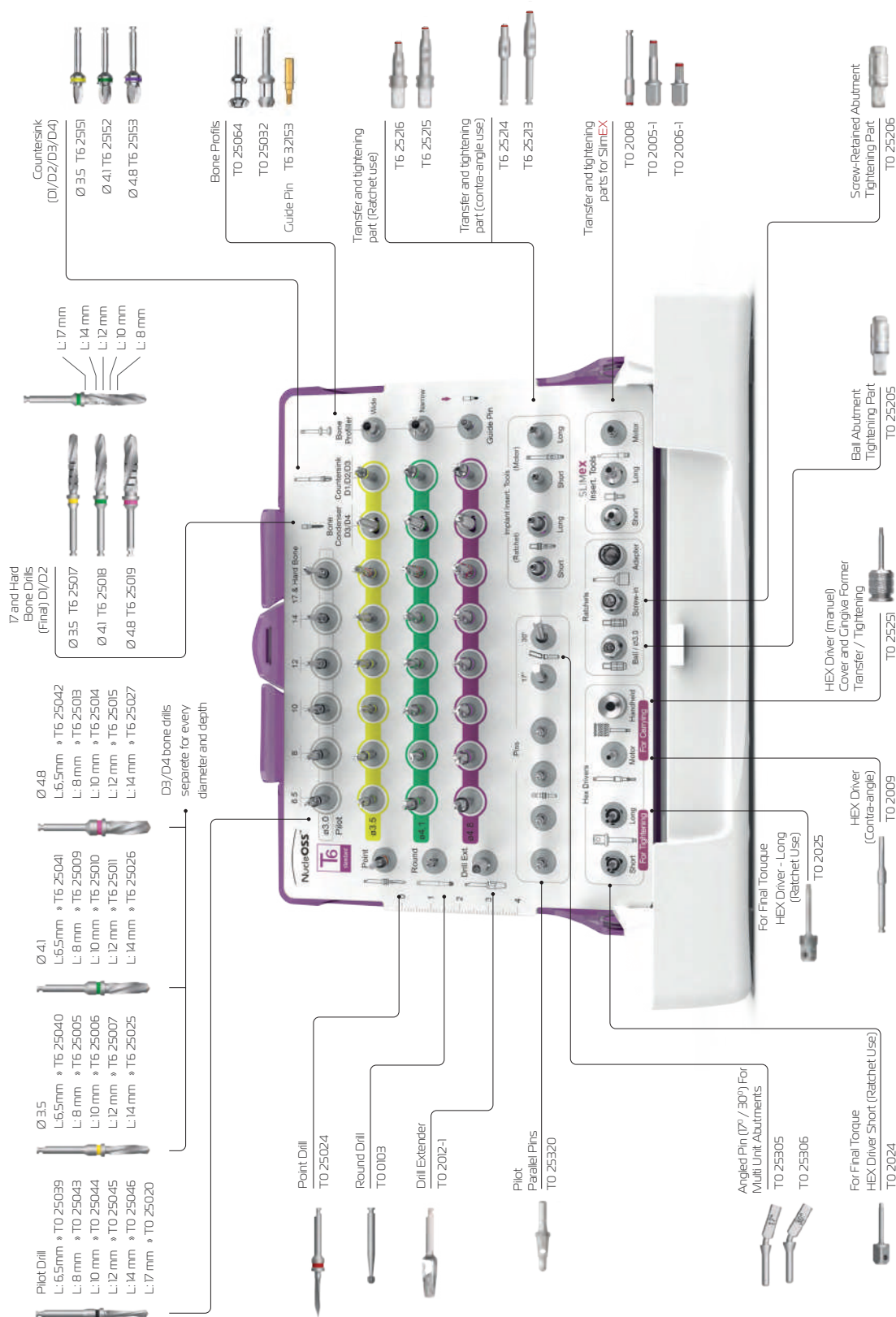
With its compact and convenient design, the parts can be sterilized in one piece without having to be taken out of the box in clinical autoclave devices.

Surgical drills are produced from high quality stainless steel, and after heat treatment, using sharpening techniques, they have a long-lasting cutting edge.

Surgical set; consists of drills, parallel pins, neck expanders, hex wrenches and hand tools.



Information about all part definitions, purpose and methods of use is included in the T6 Standard surgical guide.



safe surgery

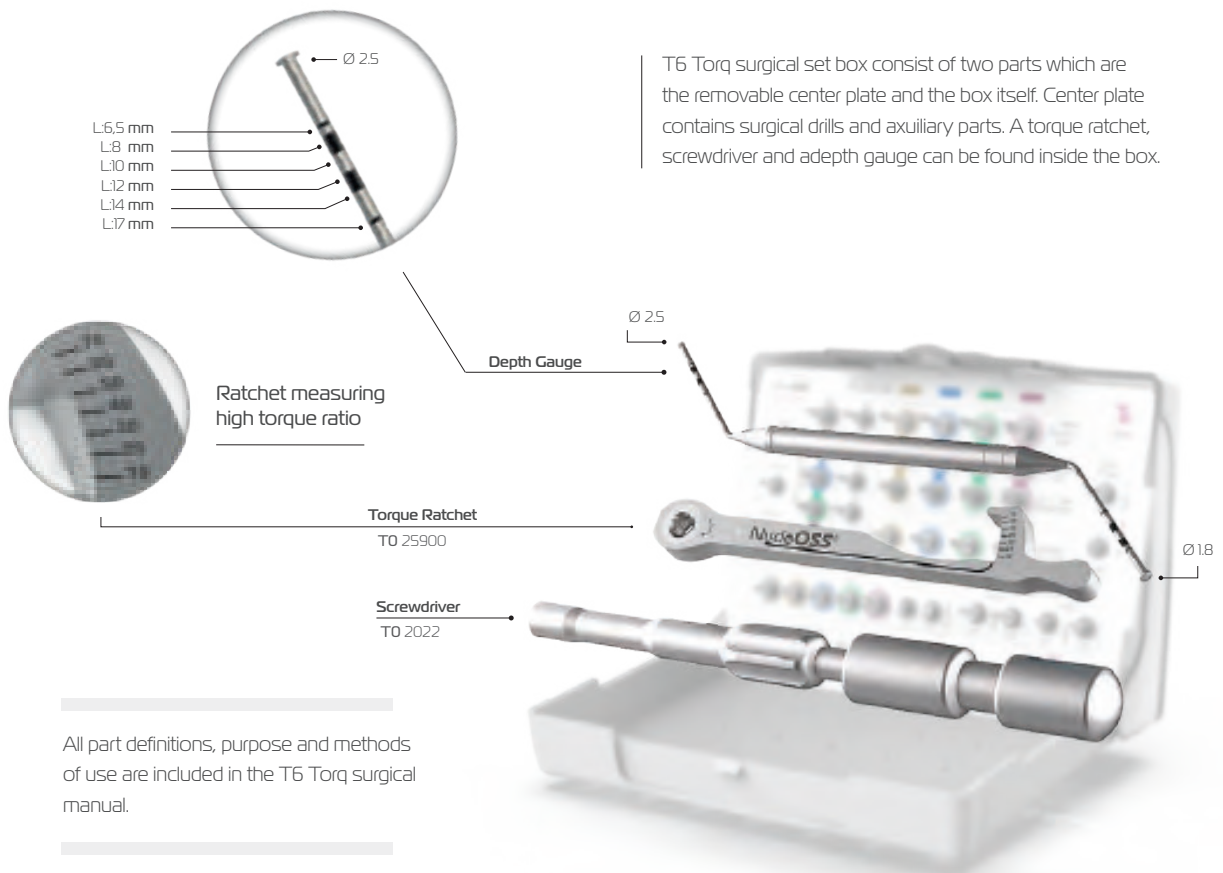
T6 Torq Surgical
and Prosthetic Kit

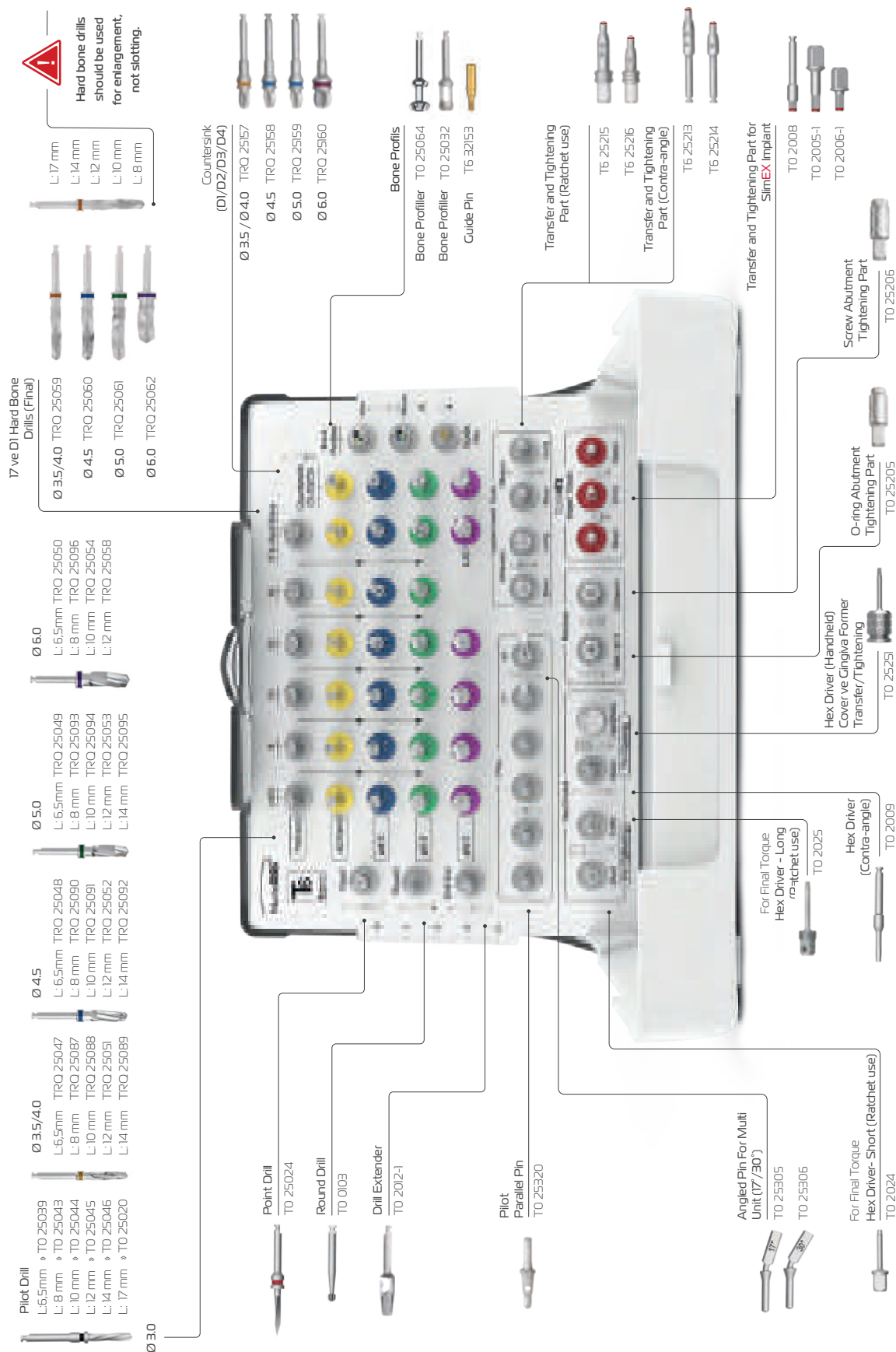


CRH-115

With its compact and convenient design, the parts can be sterilized in one piece without having to be taken out of the box in clinical autoclave devices.

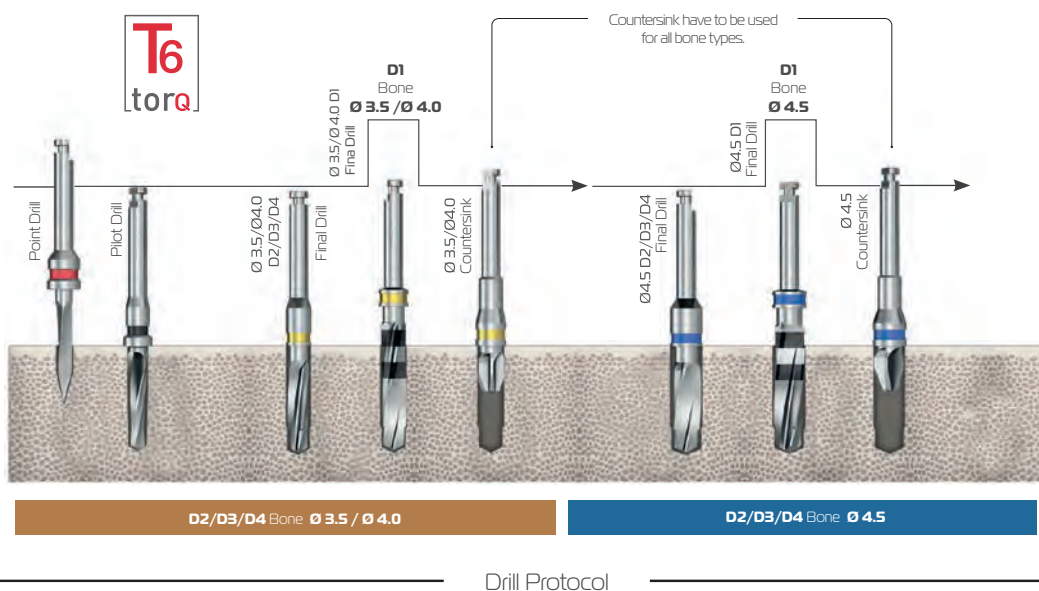
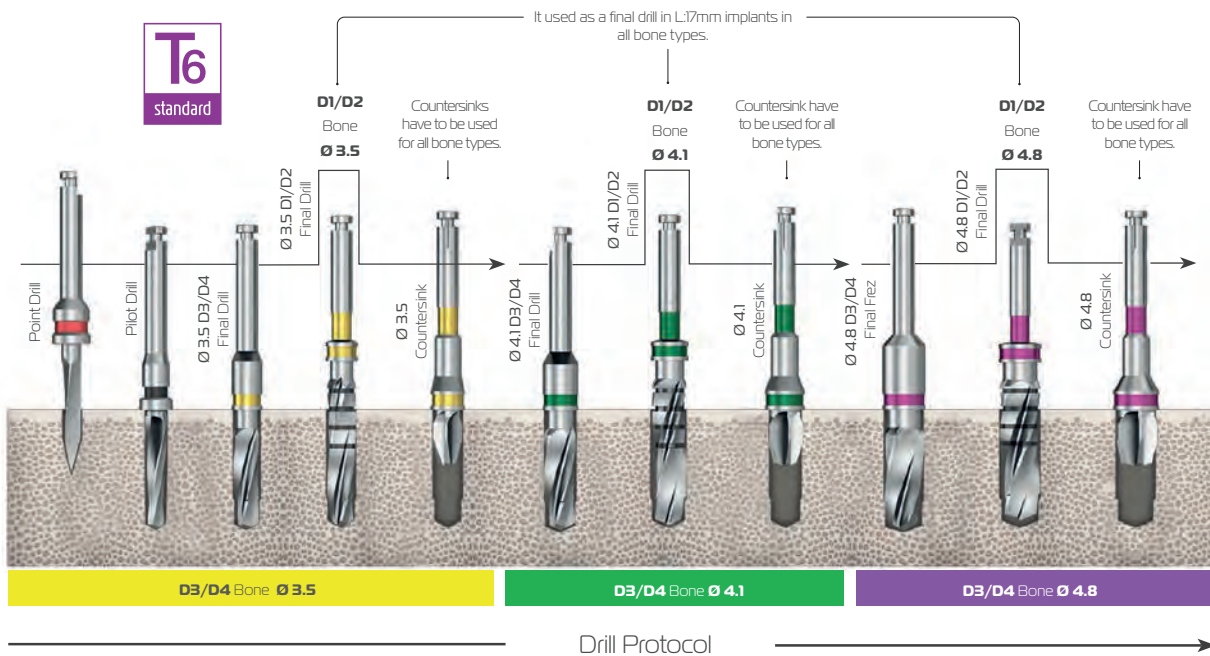
Surgical drills are made of high quality stainless steel, they are heat treated and sharp for extended cutting.





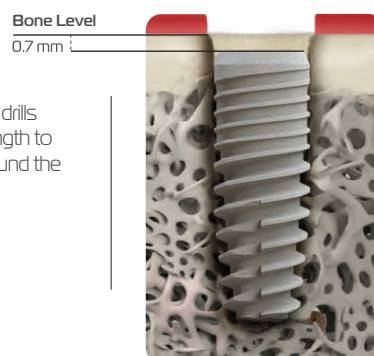
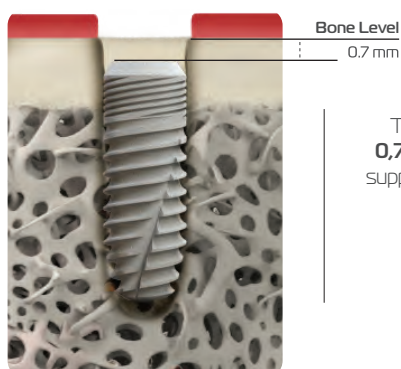
T6 surgery

T6 Standard Drill Protocol



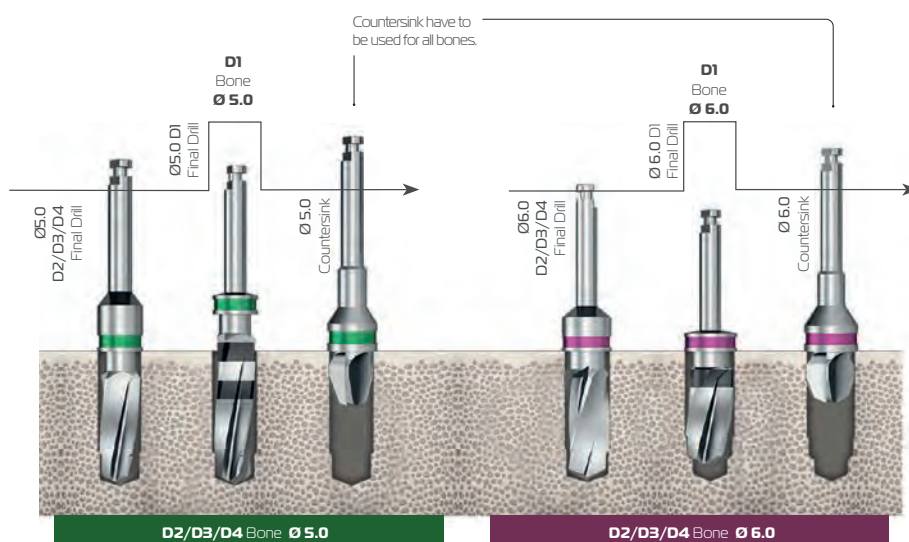
T6 surgery

T6 Torq Drill Protocol



The site prepared with the surgical drills **0,7 mm** deeper than the implant length to support healthier bone formation around the implant neck.

Please keep in mind while planning the surgery.

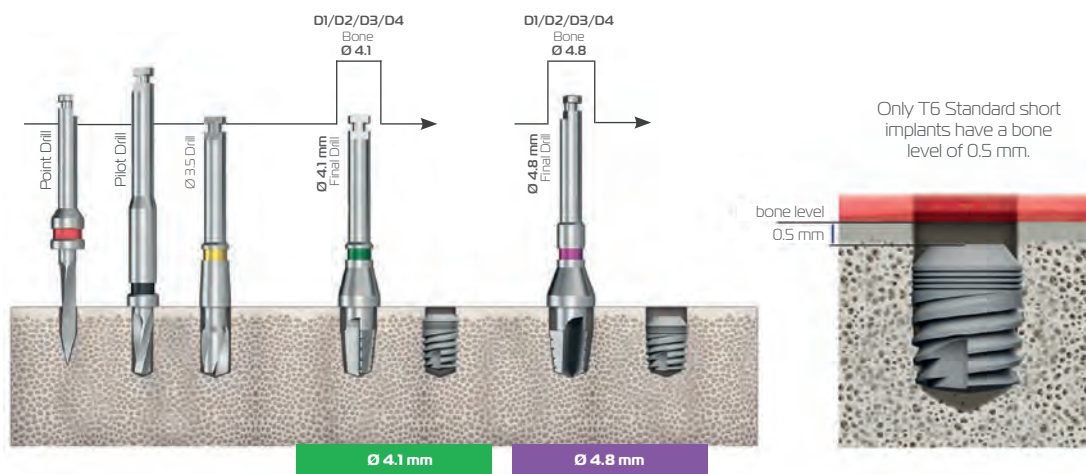


Please see NucleOSS T6 Torq surgical manual for more information.

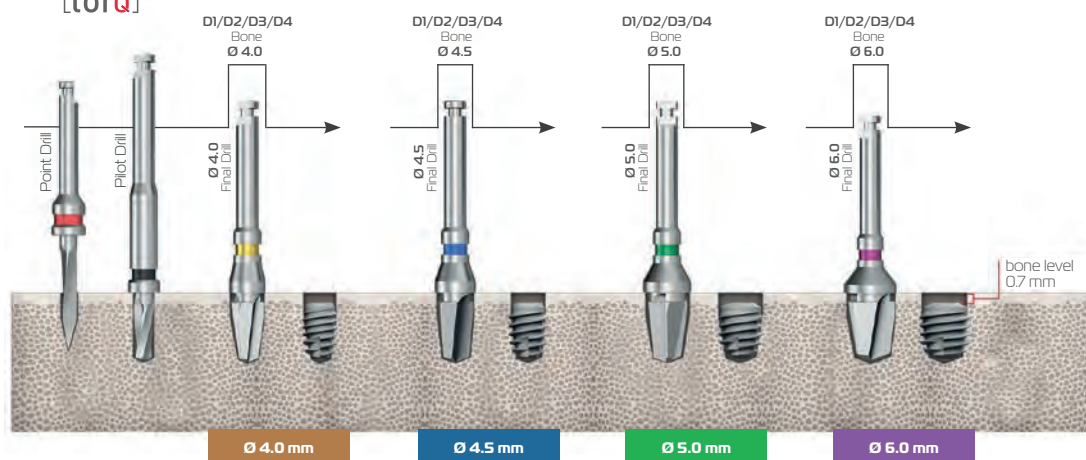
Drill Protocol

T6 surgery

Short Implants Drill Protocol



Drill Protocol







Drill Protocol

For more detailed information, you can see the surgical protocol documents
D03.001 (T6 Standard) and D03.005 (T6 TorQ).

auxiliary kits

FixOn4
CRH-110

Product Image	Material	Prosthetic Platform Ø (mm)	Gingival Height GH (mm)	Description or Name	Product Code
Fixon4 Surgical Set Parts					
	Ti Gr5			Pilot Drill	TO 25028
				Guide Drill	TO 25029
				Guide Drill	TO 25030
				Guide Drill	TO 25031
	Ti Gr5			Multi-Unit Guide	GD-01
	Ti Gr5			17° Parallel Pin	TO 25305
				30° Parallel Pin	TO 25306
				Hex Ratchet	TO 25252
	Ti Gr5	Ø4.9		Tightening Part	TO 25206
				Trepine Drill	TO 25032
				Profile Cover	T6 32153



FIXON4

T6 Fixon4 surgical set is used as a guide for performing fixed restorations on 4 implants.

The titanium guide helps the clinician during the surgery for achieving the correct position and angle of the implants.

Trepine drill and its guide pin should be used for especially angled implant insertions for shaping and corping the bone around the implant neck, Using it helps a more appropriate implantation.

auxiliary kits

Easy Guide
CRH-III

Product Image	Material	Prosthetic Platform Ø (mm)	Gingival Height GH (mm)	Product Code
Guide Drill				
	Ti Gr5	Ø 6.0		TO 25034
		Ø 7.5		TO 25035
		Ø 9.0		TO 25036
		Ø 10.0		TO 25037
		Ø 12.0		TO 25038
Parallel Pin				
	Ti Gr5	Ø 6.0		TO 25307
		Ø 7.5		TO 25308
		Ø 9.0		TO 25309
		Ø 10.0		TO 25310
		Ø 12.0		TO 25311



EASY SURGICAL GUIDE


Dentists can perform centered and parallel drilling operations with the help of guide pins and drills of the set. This set can be used for single or multiple tooth restorations.

auxiliary kits

Abutment Screw
Retrieval Kit CRH-113

Product Image	Material	Prosthetic Platform Ø (mm)	Gingival Height GH (mm)	Description or Name	Product Code
---------------	----------	-------------------------------	----------------------------	---------------------	--------------

Abutment Screw Retrieval Kit Parts

	Ti Gr5		Abutment Screw Retrieval Drill	TO 0104
			Hand Adapter	TO 25314
			Centering Tool	TO 25315
			Abutment Retrieval Part	TO 0105

Abutment Screw Retrieval Kit

T6 superstructure screws are resistant to loads more than twice the catalog torque rating.

But, in cases where the torque wrench is not used (not recommended) or in prosthetic superstructure applications with overload, fractures may be seen in the screws connecting the pieces, as can be seen in any system.

In such cases, the broken screw can be removed immediately with the help of the NucleOSS abutment screw retrieval kit parts



We recommend that you read the user manual for the
abutment screw retrieval kit parts

auxiliary kits

Prosthetic Planning
Set YRS-0001

Product Image	Material	Prosthetic Platform Ø (mm)	Description or Name	Product Code
	Ti Gr5	Ø 4.3	Straight	YRS-0002
		Ø 5.0	Straight	YRS-0004
		Ø 6.0	Straight	YRS-0005
	Ti Gr5	Ø 4.3	15°	YRS-0003
		Ø 5.0	15°	YRS-0006
		Ø 5.0	25°	YRS-0007
		Ø 6.0	15°	YRS-0008
		Ø 6.0	25°	YRS-0009
	Ti Gr5	Ø 4.2	Straight	YRS-0010
	Ti Gr5	Ø 4.2	15°	YRS-0013
		Ø 4.2	25°	YRS-0014
	Ti Gr5	Ø 4.8	Straight	YRS-0016
	Stainless Steel		Straight	YRS-0015



Prosthesis Planning Set

T6 prosthesis planning set is prepared for the physician to select the abutment at the right angle, gingiva height, and platform diameters.

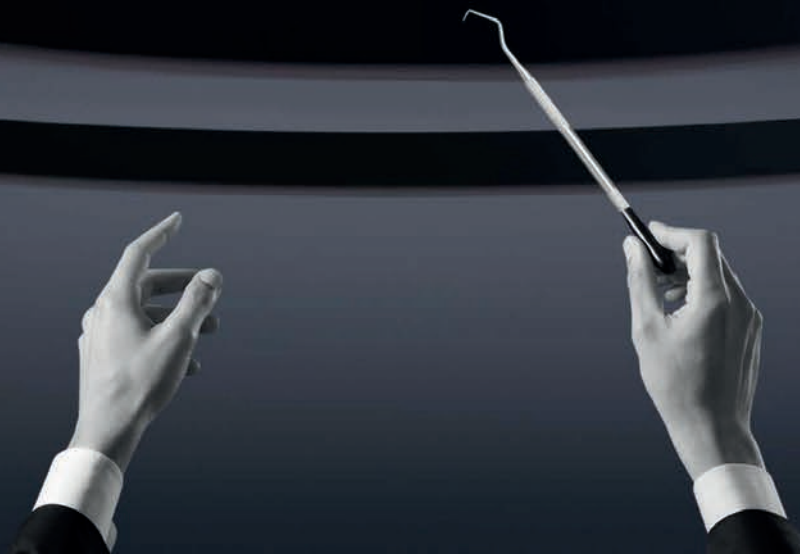
T6 standad straight, T6 angled and T6 screw-retained straight abutments in the kit help to plan and determine the most suitable angle, gingival height and platform diameter for the restoration of the patient.

We recommend that you read the user manual for the Prosthesis Planning Set.



single orchestra two implants

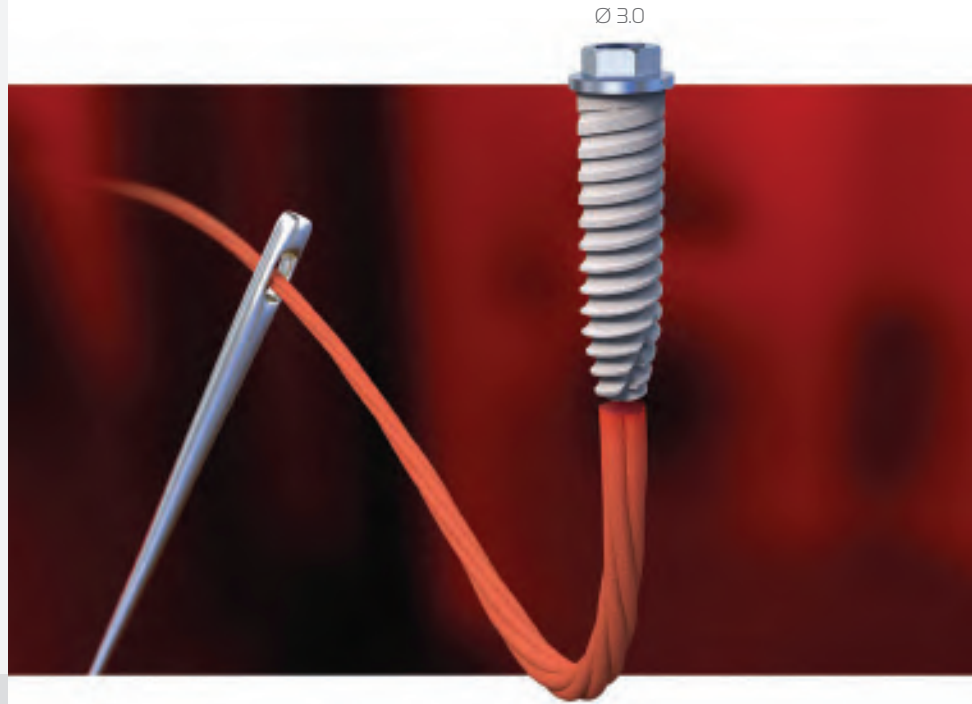
All superstructures are compatible with T6 torq
and T6 standard.



SLIM^{ex}

Offers thin and
durable solutions
in the crests where
bone thickness is
insufficient.

Bone Level Implant



extra slim **extra durable**

Slimex implant the newest member of the NucleOSS product family, offers thin and durable solutions in the crests where bone thickness is insufficient.

The certified unique Maxicell surface provides a safe and high survival rate for Slimex implants.

Slimex, which has a durable and reliable structure thanks to its external design, satisfies all implant treatments with its unique and wide superstructure options.

NucleOSS offers the Slimex implant, developed with 20 years of R&D experience and the support of specialist physicians, to the use of you, precious physicians.

Different and wide prosthetic feature, gingiva height abutment option.

Wide superstructure options are available for offering brave smiles



► Cemented Solutions



► Screw Retained Solutions



► Custom Solutions



► Overdenture Solutions



general information

General
Information

SLIM^{ex}

> Hexagonal External Connection



Thanks to hexagonal external connection of NucleOSS Slimex Implant, abutments can be applied with 6 different positions within 60° rotation.

> Double Thread

Double Thread and reverse buttress form provide faster and easy loading. Increases contact area between bone and implant.

> Strong Side Walls



> Ø 3.0 Diameter

Ø3.0 implant diameter for narrow crests.

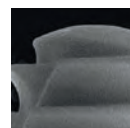
> Cutting Edges

It enables the implant to move into the implant bed steadily and without damage when placing the implant.

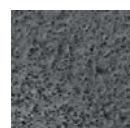
> Maxicell Surface

Proven and certificated clean and hydrophilic unique surface.

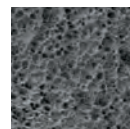
Zoom
x100



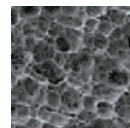
Zoom
x100



Zoom
x1500



Zoom
x3000

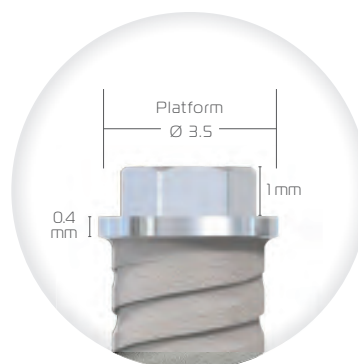


Unique
Clean
Surface

Certified
Maxicell
Surface



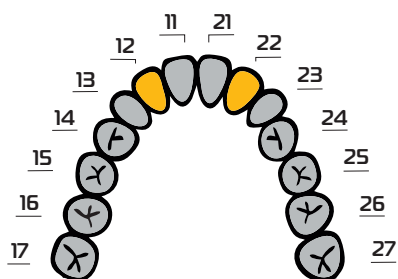
Slimex implant is
provided in four
different sizes.



general information

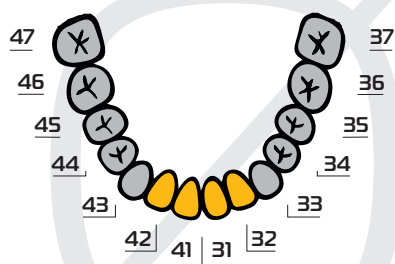
Implant Bodies

SLIM^{ex}



Diameter & Length Selection Suggestions:

The image shows the recommended areas of use according to the diameter of the Slimex bone level implant. For treatment and implant selection, the clinician should evaluate the patient, the case and the intended restoration. Use outside the specified regions is the choice and responsibility of the clinician.



Size	Product Code
L:08 >	TS 3008



Size	Product Code
L:10 >	TS 3010



Size	Product Code
L:12 >	TS 3012



Size	Product Code
L:14 >	TS 3014

general information

Package Content

SLIMex

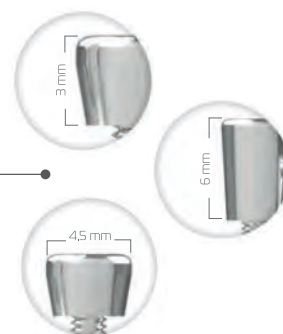
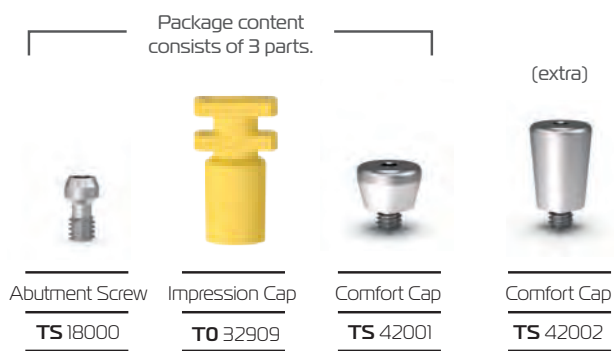
Slimex implant is provided in blister and sealed sterile tube. The implant package includes; comfort cap, impression post, abutment screw and standard abutment GH:2mm.

Hermetically
Sealed Tube Cap
Carrier Cover
TiGr-5 Carrier
(Abutment GH:2)
Implant Body
Plastic Carrier
Sterile Tube



Slimex implant boxes are opened by tearing over the line that created for security purposes.

The first safety barrier of Slimex implants are thermoforms. The package is opened by holding the opening end on the edge and the tube is taken out.



Product Image	Material	Prosthetic Platform Ø (mm)	Gingival Height GH (mm)	Description or Name	Product Code
Standard Straight Abutments					
	Ti Gr5	4.2	0.6	Straight	TS 42003
			1.6	Straight	TS 42004
			2.6	Straight	TS 42005
			3.6	Straight	TS 42006
Angled Abutments					
	Ti Gr5	4.2	1	15°	TS 42007
			2	15°	TS 42008
			3	15°	TS 42009
			4	15°	TS 42010
Auxiliary Parts					
	Plastic Ti Gr5	4.3		Impression Cap	TO 32909
				Abutment Screw	TS 18000
	Ti Gr5	4.2		Open Tray Impression Screw	TS 18002
			3	Open Tray Impression Post	TS 32606
			3	Close Tray Impression Post	TS 32603
	Plastic Stainless Steel	3.5		Impression Cap for Closed Tray	TO 32912
				Analog	TS 32206

The abutments are made of TiGr5 material.

Abutments are provided with abutment screw.

You can select the appropriate basis for planning from the table.



Package Included



Package Included

Cemante offers solutions in different prosthetic platform diameters and gingival heights for prosthetic solutions. Angled abutments offer solutions in different prosthetic platform diameters and gingival heights for cemented angled prosthesis solutions. It has 15° angle options.

slimex prosthetics

Screw-retained
Solutions
NO-HEX/HEX



Product Image	Material	Prosthetic Platform Ø (mm)	Gingival Height GH (mm)	Description/ Name	Product Code
---------------	----------	----------------------------	-------------------------	-------------------	--------------







Multi Unit Abutment (0°)

	Ti Gr5	● 4.8	1.5	Straight	TS 47000
			2.5	Straight	TS 47001
			4.5	Straight	TS 47002
	Ti Gr5	● 4.8	4.4	Confort Cap	T6 32915
			5.7	Confort Cap	T6 32921
	Ti Gr5	● 4.8		Occlusal Screw	T6 16009

Multiple Tooth (NO HEX)

	Ti Gr5	● 4.8		Impression Cap	T0 32912
				Impression Post (Close)	T6 32614
				Impression Post (Open)	T6 32613
	Ti Gr5	● 4.8		Ti - Base Abutment	T6 32813
				Temporary Abutment	T6 32916
	PEEK	● 4.8		Scan Post	T6 32037
	Delrin			Casting Cap	T6 32917
	Ti Gr5			Analog	T6 32207

Single Teeth (HEX)

	Plastik	 4.8		Impression Cap	T0 32912
	Ti Gr5			Impression Post (close)	T6 32617
				Impression Post (open)	T6 32616
	Ti Gr5	 4.8		Ti - Base Abutment	T6 32814
				Temporary Abutment	T6 32919
	PEEK	 4.8		Scan Post	T6 32038
	Delrin			Casting Cap	T6 32918
	Ti Gr5			Analog	T6 32208



Package Included





Package Included




Multi unit abutments are shipped with NO HEX option, green color burn out cap and two occlusal screws. Multi unit abutments are packed with HEX option, blue color burn out cap and two occlusal screws.

Product Image	Material	Prosthetics Platform Ø (mm)	Gingival Height GH (mm)	Description/ Name	Product Code
---------------	----------	-----------------------------	-------------------------	-------------------	--------------



Casting Abutments

	Delrin			Casting Cap (NO HEX)	TS 35000
				Casting Cap (HEX)	TS 35001
	Ti Gr5			Abutment Screw	TS 18000





Auxiliary Parts

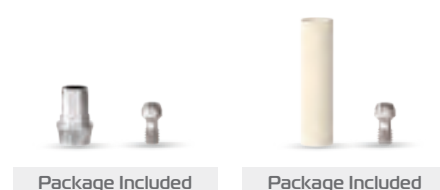
	Ti Gr5	 4.2		Open Tray Impression Screw	TS 18002
				Open Impression Post	TS 32606
				Close Impression Post	TS 32603
	Plastic			Impression Cap	T0 32912
	Stainless Steel			Analog	TS 32206

CAD-CAM Abutments

	Ti Gr5	 4.2	0.6	NO HEX	TS 42012
			2.4	NO HEX	TS 42013
			2.4	HEX	TS 42014
			0.6	HEX	TS 42015

CAD-CAM Auxiliary Parts

	Ti Gr5			T6 Multiunit Digital Analog	T6 32210
	Stainless Steel			Slimex Digital Analog	TS 32209
	Ti Gr5			Digital Analog Screw	T0 2015
	PEEK			Scan Post	TS 42011
	Ti Gr5			Abutment Screw	TS 18000



Universal Casting Caps are designed for physicians and laboratories who design personalized superstructures with the casting technique. It is made of Delrin material. There are Hex (White) for single tooth and No-Hex (Black) options for multi-tooth applications. Casting Abutments are packed with one casting cap and abutment screw.

slimex prosthetics

Overdenture
Solutions



Product Image	Material	Prosthetic Platform Ø (mm)	Gingival Height GH (mm)	Description or Name	Product Code
---------------	----------	----------------------------	-------------------------	---------------------	--------------

➤ Ball Abutment

	Ti Gr5	4.5	1.5		TS 45003
			2.5		TS 45004
			4.5		TS 45005

➤ Ball Abutment Auxiliary Parts

	Stainless Steel	3.5		Analog	TO 4521
				Impression Part	TO 32615
	Ti Gr5			Metal Ring	TO 5200
	silicon			Silicon Ring	TO 4500-3
				Silicon Ring (for Impression part)	TO 4500-18
	Ti Gr5			Metal Housing	TO 5207
	Plastic			Yellow / Soft	TO 4500-16
				Pink / Standard	TO 4500-7



Package Included




Ball abutment solutions are offered to users with different gingival heights in removable total prosthesis treatments. It is made of TiGr5 material.

Product Image	Material	Prosthetic Platform Ø (mm)	Gingival Height GH (mm)	Description or Name	Product Code
---------------	----------	-------------------------------	----------------------------	---------------------------	-----------------

Equator Abutment

	Ti Gr5		1.5		TS 45000
			2.5		TS 45001
			4.5		TS 45002

Equator Abutment Auxiliary Parts

	Ti Gr5	 4.5		Impression Post	044 CAIN
				Analog	144 AE
				Tightening Part (Ratchet)	774 CHE
				Tightening Part (Contra-angle)	760 CE
				Cap Inserter and Extractor Tool	485 IC
	Ti Gr5			Metal Housing	CA008
	Silikon			Transparent / Standard	CN051
				Pink / Soft	CN052
				Black / Laboratory	CN068



Package Included

Equator abutment solutions are offered to users with different gingival heights in removable total prosthesis treatments. It is made of TiGr5 material.

safe surgery

T6 Standard and T6 Torq
Surgical and Prosthetic Kit

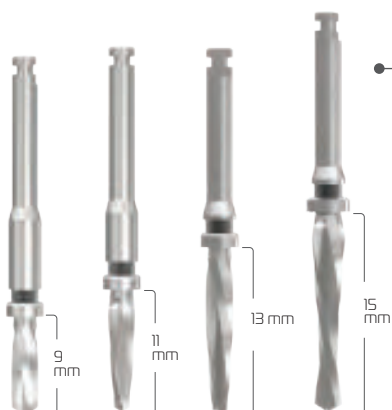
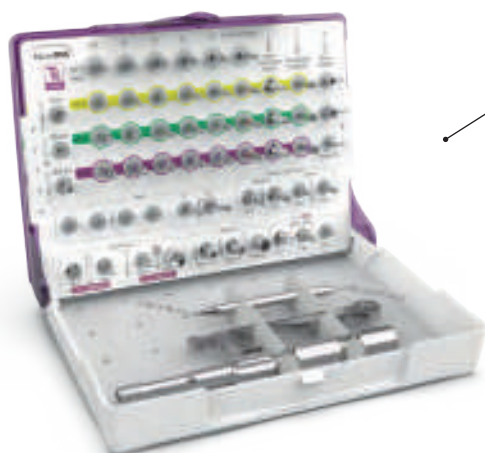
SLIM^{ex}

During the surgery and prosthetic phases of SLIMEX implant, T6
Standard and T6 Torq surgical sets are used.

CRH-109
T6 Standard Surgical Set



CRH-115
T6 Torq Surgical Set



T6 pilot drills are used for Slimex
drilling protocol.



TO 2005-1



TO 2008



TO 2006-1

L:08	L:10	L:12	L:14	>	Size
TO 25043	TO 25044	TO 25045	TO 25046	>	Product Code

T6 Standard and T6 Torq surgical kits have carrying
and tightening parts for SLIMEX implant.



Ball Abutment Tightening Part

Ball abutment tightening part is compatible with the external hex connection of the implant, and it can be used after the implant is placed.



Ratchet

Screwdriver

Motor

Attention : The red silicon ring at the edges of the carrying parts prevents the implant from falling when carrying. Therefore, before using it, make sure that the silicon ring is in its place and without damage.



Point
Drill



Round
Drill



Drill
Extension



Pilot
Parallel Pin



Screw-Retained
Tightening Part



Hex Driver
Short (Ratchet)



Hex Driver
Long (Ratchet)



Hex Driver
(Motor)



Hex Driver
(Handheld)



Ball Abutment
Tightening Part

Information about all part definitions, intended use, and methods are in Slimex surgical guide.

safe surgery

Slimex Drill Protocol

SLIMex

Implant Preoperative Planning

A drilling operation is carried out with point drill in order to identify the drilling location.



Step 1

Ø3.0 Pilot Drill

The bed preparation is completed by entering into the hole opened with point drill with the pilot drill according to the implant size.

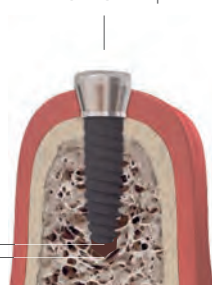


Step 2

The drill length is 1mm longer than the implant length. This must be considered during surgical planning.

The suitable implant is placed in the bed, and the comfort cam retrieved from the package is used.

Comfort Cap



1 mm

Step 3

For drilling protocol of SLIMex implants, NucleOSS standard pilot drills are used.

NucleOSS pilot drills are produced 0.7mm longer than implant length for mounting T6 standard and T6 TORQ implants 0.7mm below bone level.

For this reason, in case of stopper touching the bone, drill will prepare implant bed 1mm deeper than implant length.

implants drill protocol must be planned by considering this distance.

notes

[illegible]